

## The GALLERY Family of Products

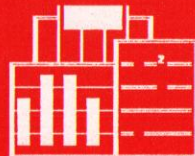
**GALLERY™** — Electronic Mail, Menus and File Manager for PC Networks. Server software for Network Gallery. No workstation software required, no per-workstation charges for using Network Gallery. Price includes software, System Manager's Guide, and User's Guide. **\$495.00**

**GALLERY™ ELS** — Electronic Mail, Menus and File Manager for PC Networks. Limited version of Network Gallery — supports a maximum of 25 users. No workstation software required, no per-workstation charges for using Network Gallery. Price includes software, System Manager's Guide, and User's Guide. **\$195.00**

**GALLERY™ for MHS** — Electronic Mail, Menus and File Manager for PC Networks. MHS-compatible Gallery for Multi-server LANs, WANs, Mini/Mainframe Host Mail and FAX Gateway compatibility. No workstation software required, no per-workstation charges for using Network Gallery. One copy of server software required for each server using Gallery, MHS (Message Handling Service, trademark of Action Technologies) is also required. Price includes server software, System Manager's Guide, and User's Guide. **\$695.00**

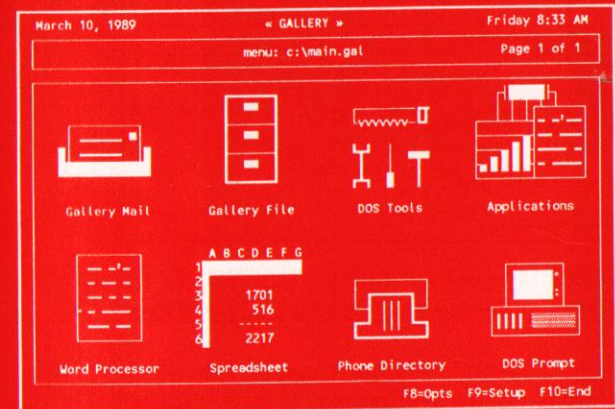
**GALLERY SA™** — Menus and File Manager for Standalone PCs. Standalone version of Gallery gives Gallery Menus and File Manager to PCs not logged in (or not connected) to networks. May be integrated with Network Gallery for seamless interface on and off the network. **\$79.95**

Gallery™ and Gallery SA™ are trademarks of Daystrom Data Products. Novell® is a registered trademark of Novell Inc.



Daystrom Data Products  
15 Sunrise Hill Road  
Fishkill, NY 12524  
(914) 896-7378

## A Picture is Worth a Thousand Words

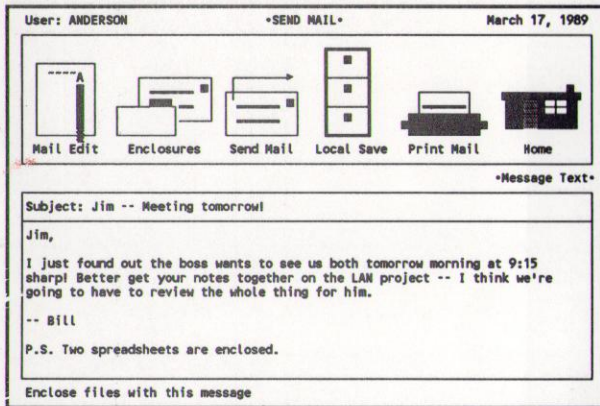


# GALLERY™

**Electronic Mail, Menus  
and File Manager**

**For Networked or  
Standalone PCs**

# GALLERY MAIL



*GALLERY Mail* provides the state-of-the-art in Electronic Mail and easy File Transfer for Networks.

The *GALLERY* icon-interface makes the Mail System simple to learn and use, and *GALLERY Mail* has features that include:

Send messages TO: or CC: multiple users and/or mailing lists (maintain up to 20 Personal Lists per user, plus 30 Public Lists)

Instant message notification **WITH NO TSRs** to hog memory and crash programs.

Return Receipt and Mail Status features track message delivery.

Enclose multiple files along with mail messages (ANY PC file can be enclosed -- up to 20 files per message).

Save received messages or enclosures -- messages may be appended to correspondence files with date/time stamp.

Send Quick Answers (to sender) and Forward messages (to others) with comments added.

Unique "Auto-Forward" feature automatically CC's incoming messages to another user when you're away from your office (you ALWAYS receive your copy on your return, and senders can keep confidential messages private).

Complete security against snooping readers by password protection, message encryption and "Password Lockout" feature (on NetWare systems, passwords are verified as REAL NetWare passwords for total security)

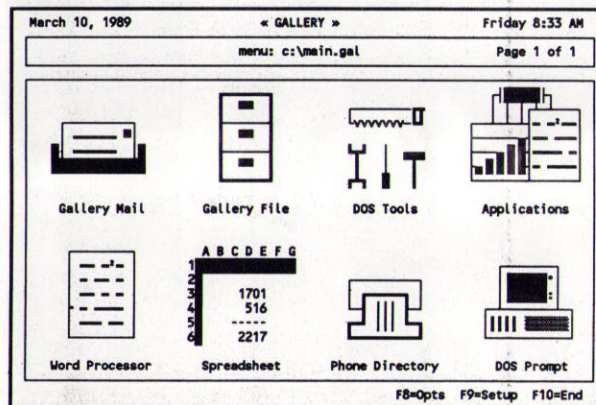
Fast, easy installation -- on Novell networks *GALLERY* uses real Novell user IDs and passwords (the only truly "turnkey" Mail system for Novell networks). *GALLERY's* own user maintenance facility gives User IDs and Passwords to other networks that don't provide them.

# GALLERY MENU

*GALLERY Menu* provides unique icon-based user menus for PC systems, which don't even require a graphics monitor. With *GALLERY*, you can point at a mail tray to use the Mail System, point at a filing cabinet to work with the File Manager, or point at a trash can to delete something -- this way, people learn to use the system quickly, and have fun in the process.

Users of RAM-hungry applications don't have to worry about memory limitations with the *GALLERY Menu* System, because, unlike most menu programs, **GALLERY MENUS OCCUPY NO MEMORY AT ALL** when an application is running.

*GALLERY* supports any type of Menu/Submenu structure, both on networks and in standalone



installations, and allows an unlimited number of submenus with no RAM overhead.

The simplicity of *GALLERY Menu* allows even novice users to install and use new menu icons in moments, even with the most rudimentary knowledge of DOS -- while the unprecedented flexibility and control provided allows the creation of a total environment for end users.

Multiple command lines may be used to run an application, and passing of parameters to programs is also supported, along with other advanced feature that allow users to set up highly customized turnkey applications. Users will find an icon for every possible application among more than 30 icons supplied in the *GALLERY* icon library.

# GALLERY FILE

*GALLERY File* is a powerful PC file manager for networks and standalone PCs that uses the Gallery Icon interface.

An indispensable tool for novices and experienced users alike, *GALLERY File* insulates users from DOS commands while allowing quick file copying, viewing, deleting and editing.

With *Gallery File*, new PC users don't have to learn a host of DOS commands just to get up and running on a new system, and experienced users don't have to exit to a DOS prompt to search for files or execute basic DOS commands. The program has been carefully designed to be easy for novices to learn very quickly, because of its intuitive operation.

*Gallery File* provides icons for features that include:

Sort files by Name, Type, Date or Size.

View contents of files with the "View File" icon.

Copy multiple files with the "Copy Files" icon, or Delete them with the "Discard" trash can icon.

Edit DOS files using editor of your choice with the "Modify File" icon (you can specify your favorite DOS text editor when you install Gallery).

Run programs (.EXE, .COM, .BAS) and batch files by simply pointing at them and selecting the "Run Program" icon.

Print text files with the "Print File" icon.

